

FLUKE®

MET/TEMP

Metrology Software

Instruction Sheet

Introduction

MET/TEMP Software allows you to calibrate multiple thermocouples or thermal switches at one time, using the Hydra 2635A and Fluke 500 Series Dry-Block Temperature Calibrators.

MET/TEMP can be used as a standalone application or integrated with MET/BASE.

Manual

The manual for this product is provided in .pdf format on the CD. To open it:

1. Insert the CD and browse to the **doc** folder.
2. Select the file **mettemp.pdf**.

In order to view the manual you will need Adobe Acrobat Reader. If you do not have Acrobat Reader, a copy is provided on the CD.

1. Insert the CD and browse to the **doc** folder.
2. Open the **Adobe** folder and run the **.exe** file in this directory to install the reader.

Box Contents

- CD containing software and Users Manual
- License disk
- Instruction Sheet

How to Contact MET/SUPPORT

Within the United States, toll-free telephone support is available from 7:30 AM to 4:30 PM, Pacific Standard Time.

Toll-free: 1-800-825-7411

Phone: 1-425-446-5780

Fax: 1-425-446-5992

E-Mail: metsupport@fluke.com

WWW: <http://www.fluke.com>

Address: Fluke Corporation

PO Box 9090

Everett WA 98206-9090

Attention: MET/SUPPORT, MS 275G

See the online Users Manual for information on support outside the U.S.

Installation

You can install MET/TEMP Software as standalone software with data saved to a file, or as an accessory to MET/BASE software, with data saved to the MET/BASE database.

Installation as a Standalone

1. If you are installing MET/TEMP Software to run as a standalone system (without MET/BASE), simply insert the provided CD. If your system does not automatically start the install process, browse to your CD drive and double-click the **setup.exe** file.
2. As the install proceeds, allow the software to install to the defaults provided unless you have a compelling reason for not doing so.

Installation as an Accessory to MET/CAL

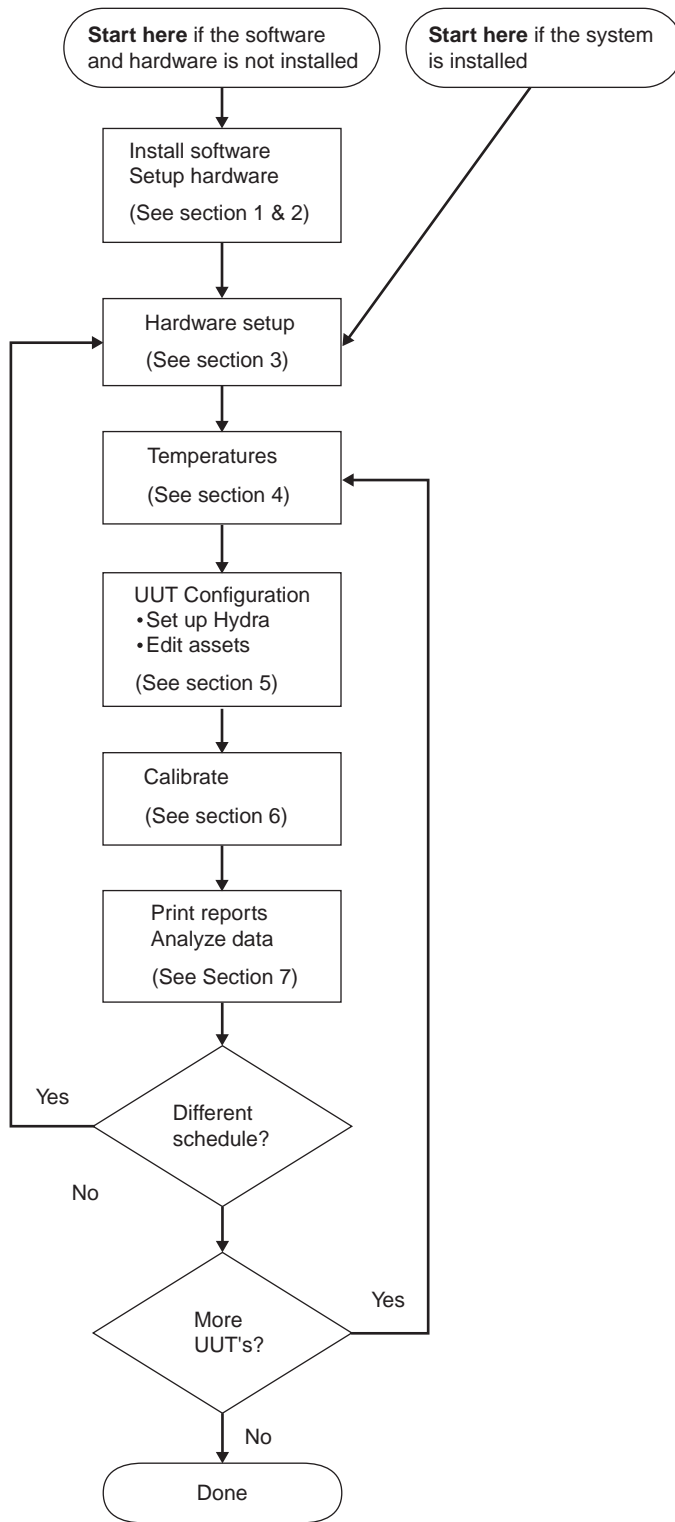
Until MET/TEMP Software is fully integrated with MET/BASE, follow these steps:

1. Install MET/BASE, following the instructions in the *Fluke Metrology Software Installation and Upgrade Guide*.
2. Install MET/TEMP software files on the server into the shared MET/CAL directory. Run setup on the CD.
3. Install MET/TEMP software files into the shared MET/CAL directory on clients. Run `metcal/client/setup`.
4. Apply the MET/BASE license disk, following the instructions in the *Fluke Metrology Software Installation and Upgrade Guide*.

Operation

To operate the software, refer to the flowchart on the back of this page and the online Users Manual. Each step in the flow chart refers to a section in the manual that contains complete instructions for that step.

MET/TEMP



afpo6f.eps

MET/TEMP Operating Instructions